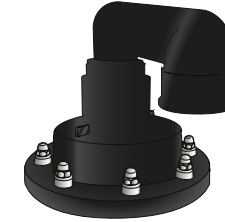
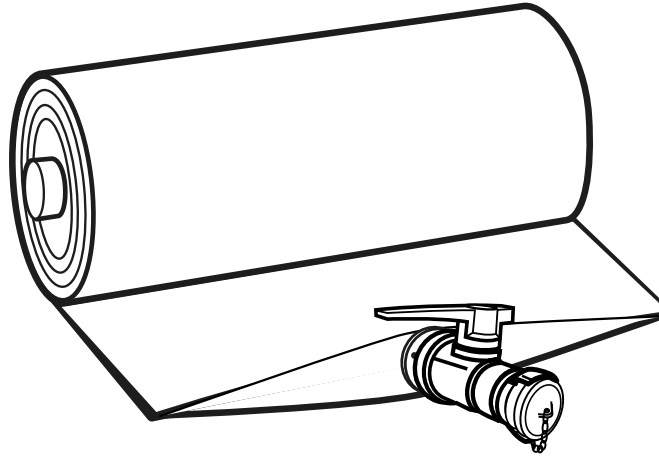




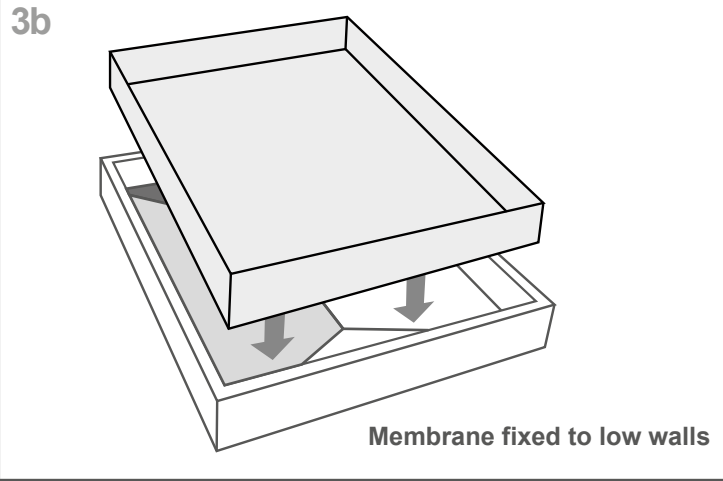
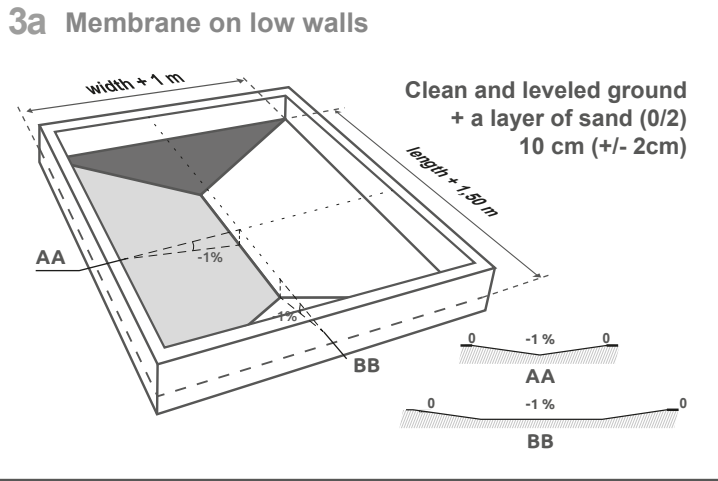
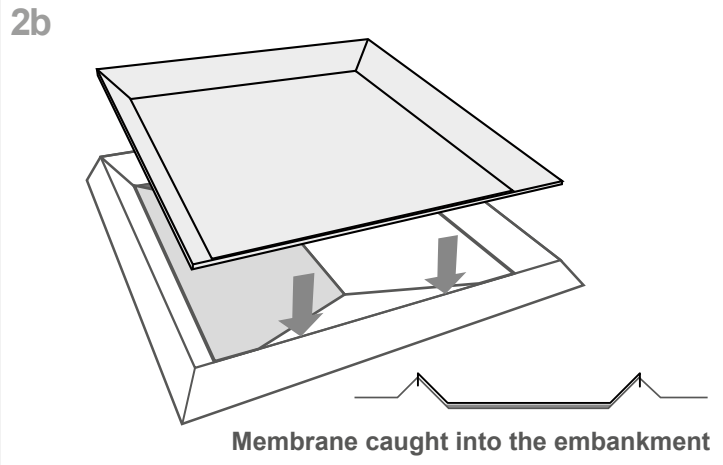
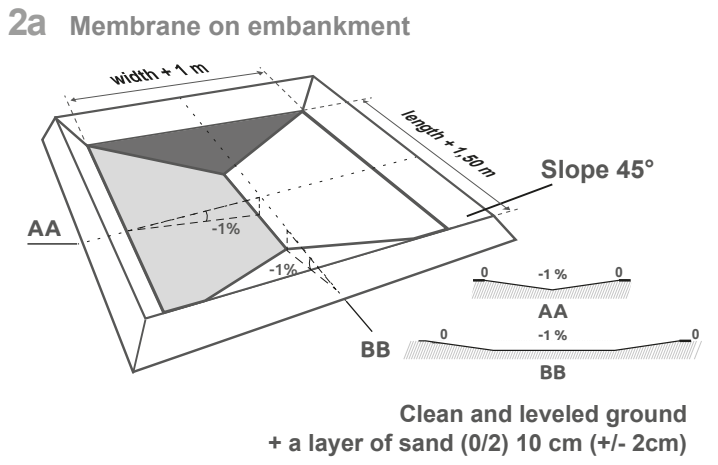
**1**

**WARNING**

If the filling is not done immediately:  
**ballast the tank**  
 with a minimum of 5 cm of liquid



Optional  
On the top filling



**4**

**IMPORTANT**

Installation of the tank according to its volume

V. (m <sup>3</sup> )	
1 to 100	1 to 2
100 to 300	3 to 4

It is **strictly forbidden** to handle the product with machines to avoid any deterioration



**5**

**Follow the unfolding plan**  
attached to this installation guide

**6 Unfold the tank** according to the diagram

**7**

**MANDATORY**

Mounting pads necessarily before filling for each angle

**x4**

Use a 10mm wrench (not provided)

**8 Stir the tank** by the angles from top to bottom **manually**

This step is necessary to pass air under the tank to facilitate its movement and positioning

**9 Shake and spread** correctly the tank to remove all the folds

It is **ESSENTIAL** to install the tank **correctly** to fill

**10 FOR ALL THE INLETS/OUTLETS**

**STRETCH WITH CARE** without using tools, in order to pass the counterflange with its seal inside

**Install the counterflange correctly** in its socket

**11**

Use a 13mm wrench (not provided)

Optional

Overtightening can cause the counterflange to break

It is necessary to repeat steps 8 and 9 once all the parts are installed

**12**

**Overview** on embankment

Follow the instructions for use

**13**

**Overview** on low walls

Follow the instructions for use