

3

IMPORTANT

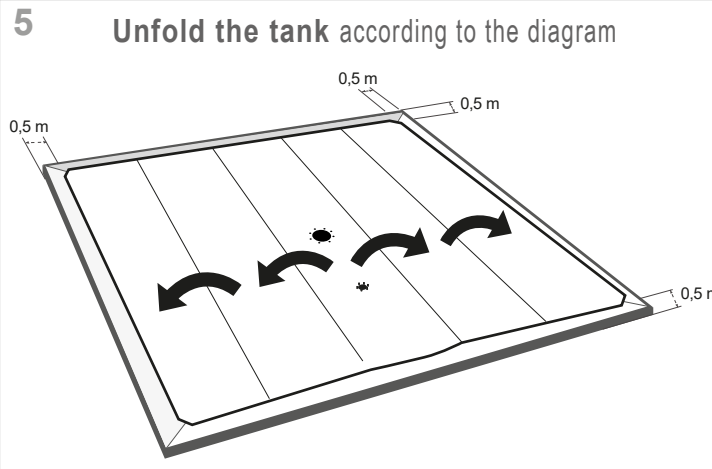
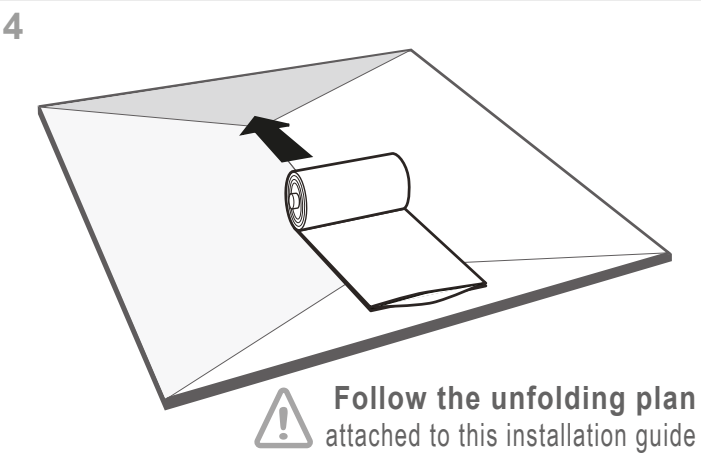
Installation of the tank according to its volume

V. (m ³)	Number of people
1 to 180	1 to 2
180 to 480	3 to 4
480 to 700	4 to 6

WARNING

If the filling is not done immediately:
ballast the tank with a minimum of 5 cm of liquid

It is **strictly forbidden** to handle the product with machines to avoid any deterioration



6

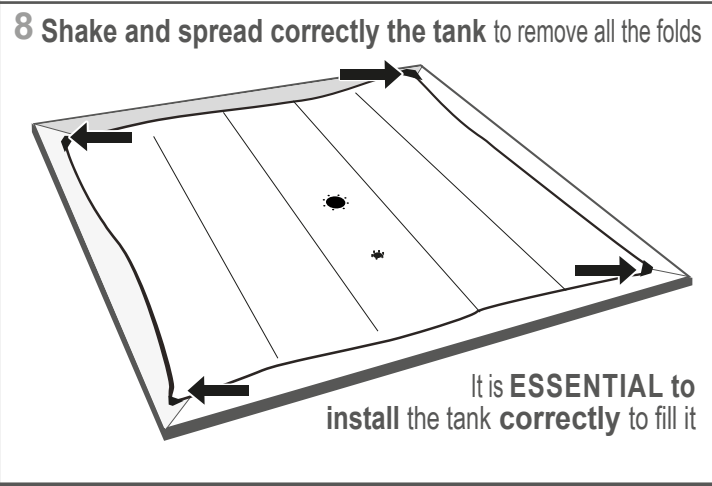
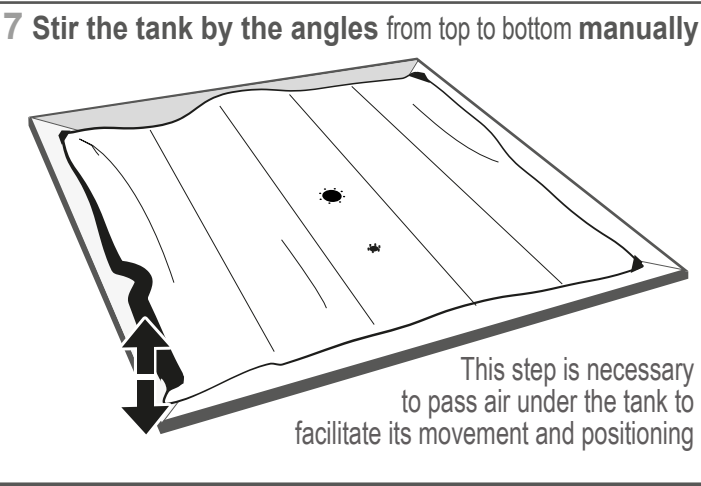
MANDATORY

Mounting pads necessarily before filling for each angle

COATED FABRIC

x4

Use a 10mm wrench (not provided)



9

FOR ALL THE INLETS/OUTLETS

STRETCH WITH CARE without tools, in order to pass inside the counterflange with its seal

Install correctly the counterflange in its socket



10 Use a 13mm wrench (not provided)

Overtightening can cause the counterflange to break.

11 Use a 13mm wrench (not provided)

Overtightening can cause the counterflange to break.

12

ESSENTIAL STEPS TO RENEW

1 - Stir the tank

2 - Shake and spread the tank: remove all the folds on the surface

13 Glue and lubricant (not provided)

GLUE

LUBRICANT

14

5.50 m

2.20 m

AXE

1 m

15 Sectional view

Filling

Sand

Gravel for drain

Pipe

Clear some sand around the pipe

16 Fill around the flange with sand to prevent water pockets

A

B

GLUE

17 Shake and spread correctly the tank: remove all the folds on the surface before filling

2 filling possible

18 Follow the instructions for use